

COVID-19 (SARS-CoV-2) Antigen Rapid Test Kit

INTRODUCTION

AbChek Covid-19 antigen kits are modified with higher sensitivity and specificity compared to other available rapid kits. AbChek Covid-19 antigen kits shows better performance and have increased ability to detect current mutant strains.

Corona Viruses are enveloped RNA viruses that are distributed broadly among humans, birds and other mammals that cause respiratory, enteric, hepatic and neurological diseases. WHO has officially named the disease as Corona virus diseases 2019 (COVID-19). The main manifestations include fever, fatigue and dry cough. Nasal congestion, runny nose, sore throat, myalgia and diarrhea are found in a few cases. Antigen is generally detectable in upper respiratory specimens during the acute phase of infection. Rapid diagnosis of SARS-CoV-2 infection will help healthcare professionals to treat patients and control the disease more efficiently and effectively.



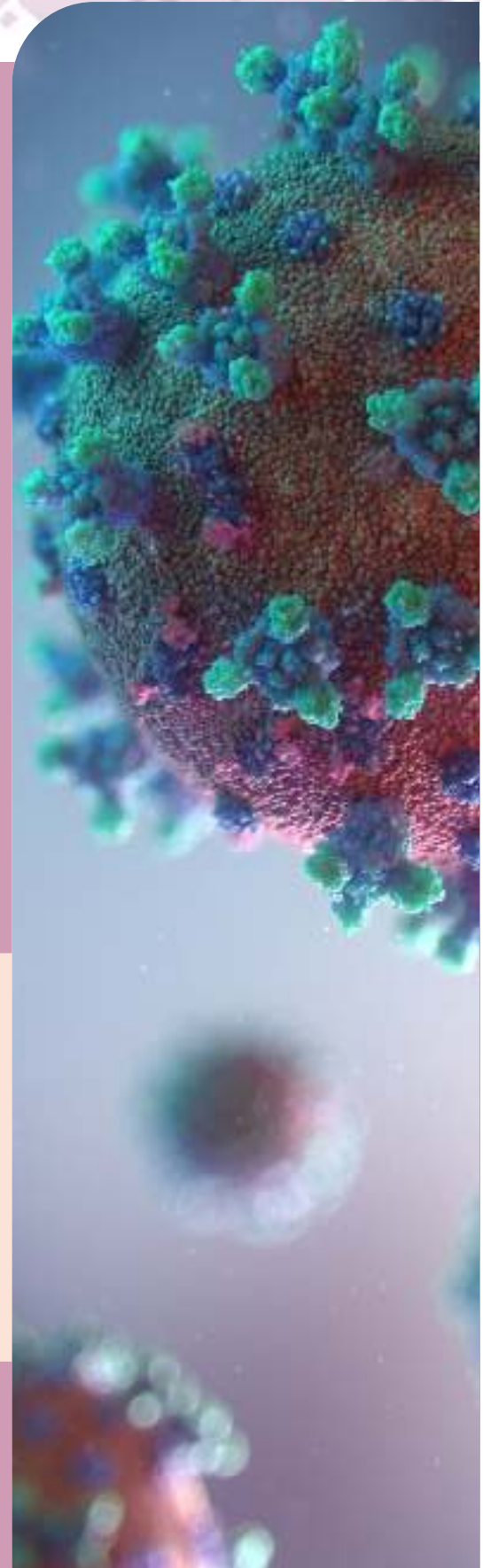
Specimen : Nasopharyngeal Swab specimens



Time : Read result in 15 min



Product Description	Specimen	Format	Kit Size
AbChek COVID-19 (SARS-CoV-2) Antigen Rapid Test	Nasopharyngeal swab	Cassette	25 Tests/Kit



Intended Use

AbChek COVID-19 (SARS-CoV-2) Antigen Test is a rapid and convenient immunochromatographic assay for the qualitative detection of COVID-19 (SARS-CoV-2) Antigen (viral nucleoprotein) from nasopharyngeal/nasal swab obtained from patients with signs and symptoms of respiratory infection. This test is for administration by healthcare workers and labs only, as an aid to early diagnosis of SARS-CoV-2 infection in patients with clinical symptoms of SARS-CoV-2 infection. It provides only an initial screening test result. This product is strictly for medical professional use only and not intended for personal use. The result of this test should not be the sole basis for the diagnosis use. The result should be confirmed by Real-Time Reverse Transcriptase (RT)-PCR Diagnostic kit. The test is intended for professional and laboratory use.

Package Contents

- Test Cassette
- Extraction Buffer Bottles (three per box, 5ml per bottle, total of 15 ml buffer)
- Reagent Tube with Cap
- Sterilized Nasopharyngeal swab
- Test Instruction

1. Add 400ul extraction buffer (approximately 12 drops) into the reagent tube.



2. Add Nasal/Nasopharyngeal swab to the tube with extraction buffer.



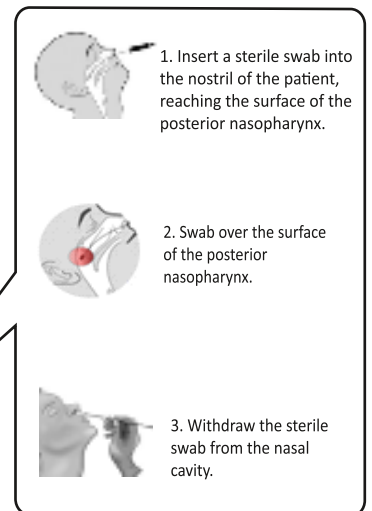
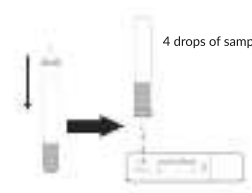
3. Vigorously rotate and twist the swab against the side of the tube at least 10 times.



4. Squeeze the sides of the tube to obtain as much liquid as possible. Dispose of swab properly.



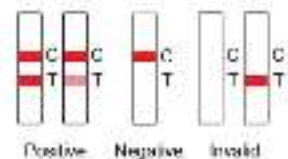
5. Apply the cap to the tubes with specimen, and hold the tube vertically, add 4 drops (about 120 µl) of the specimen without air bubbles into the sample well.



Test procedure & interpretation of results



15 minutes



*Please consult IFU for complete procedure while using the test.