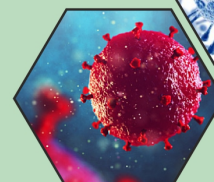
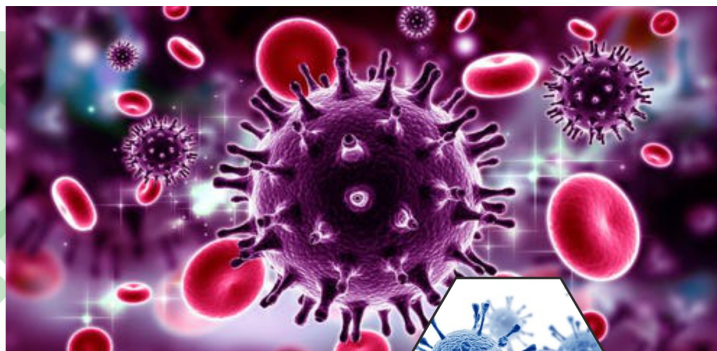


AbChek[®]

HIV 1&2 (IgG, IgM, IgA) Antibody Rapid Test

AbChek One Step HIV 1&2 Rapid Test



INTRODUCTION

Human Immunodeficiency Virus type I and type II (HIV-1 and HIV-2) are enveloped, single stranded, positive sense RNA viruses. HIV (Human Immunodeficiency Virus) is the virus that causes AIDS. This virus may be passed from one person to another when infected blood, semen or vaginal secretions come in contact with an uninfected person's broken skin or mucous membrane. In addition, infected pregnant women can pass HIV to their baby during pregnancy or delivery as well as through breastfeeding.

INTENDED USE

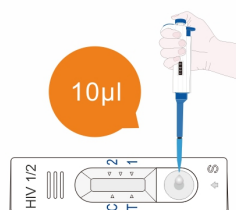
AbChek One Step HIV 1&2 Rapid Test is a lateral flow immunoassay for the simultaneous detection and differentiation of HIV-1 and HIV-2 antibodies (IgG, IgM, IgA) in human serum, plasma and whole blood. It is intended to be used as a screening test and as an aid in the diagnosis of HIV infection.

TEST PROCEDURE AND RESULT INTERPRETATION

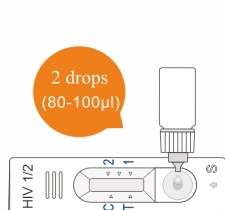
SPECIFICATIONS

- ★ Specimen : Serum / Plasma / Whole Blood
- ★ Shelf life and Storage - 24 months at 4-30°C
- ★ Performance Characteristics : Sensitivity- 100% , Specificity- 100%
- ★ Highly sensitive even to IgM during early infection stage
- ★ Differentiates test result between HIV-1 and HIV-2 by clear band formation (3 lines)

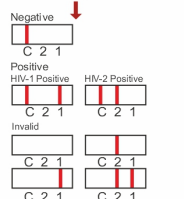
Serum/Plasma



1 Add 10µl of serum or plasma vertically into the sample well.

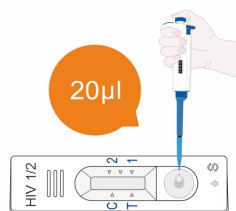


2 Add two (2) drops (80-100µl) of sample buffer into the sample well.

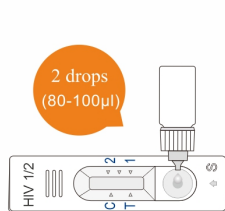


3 Read Results within 15-20 minutes. The result is invalid over 20 minutes.

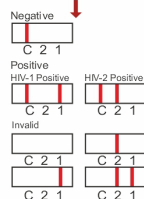
Whole Blood



1 Add 20µl of whole blood vertically into the sample well.



2 Add two (2) drops (80-100µl) of sample buffer into the sample well.



3 Read Results within 15-20 minutes. The result is invalid over 20 minutes.



Product Name	Specimen	Format	Kit size
AbChek One Step HIV 1&2 Rapid Test	WB / S / P	Cassette	50T/Box

Our Authorized Dealer